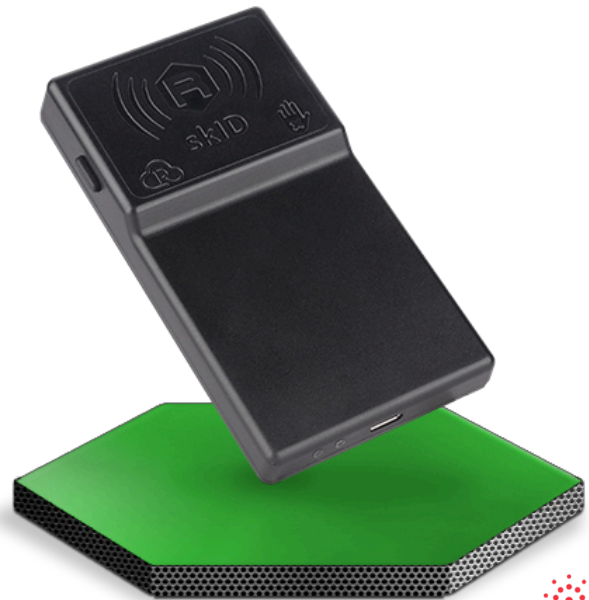




R1280I

skID

Mini Sled RAIN RFID Reader



BENEFITS	High Performance reading	Pocket size	Flexibility	USB Type C	HID	Bluetooth
-----------------	--------------------------	-------------	-------------	------------	-----	-----------

Features

- RAIN RFID (UHF EPC Class1 Gen2, ISO 18000-63) compliant
- ETSI, FCC and ARIB versions available
- Bluetooth communication
- Integrated circular polarized antenna
- Ergonomic form factor
- Battery powered
- iPhone/iPad compatibility
- 3 mounting options: magnetic, 3M Dual Lock™ or SP-Connect™

Applications

- RAIN RFID add-on to smartphones, tablets and mobile terminals
- Shop inventory and cycle counting
- Mobile point of sale
- Field sales mobility
- Mobile workers

Overview

The **skID** (Model R1280IE, R1280IU, R1280IJ) is a portable RAIN RFID reader of the easy2read® product line with integrated antenna for medium range applications.

The reader hosts an internal rechargeable battery and can operate both in wired mode, using a USB cable, or in wireless mode through the Bluetooth® interface.

Thanks to the Bluetooth® communication interface, the **skID** is a perfect add-on for any Bluetooth® enabled host such as a PC, a smartphone, a PDA or a tablet for RAIN RFID readings. The reader is compatible with Windows, Android and iOS operating systems.

The device supports both Bluetooth Low Energy (BLE) and Bluetooth classic communication to provide the maximum usage flexibility, including the HID profile for keyboard emulation.

The **skID** can be easily fixed to the smartphone using 3 different methods: magnets, 3M Dual Lock or SP-Connect.

Designed for mobile operators, the **skID** is ideal for inventory management, mobile workers, service and maintenance applications.



Technical Specification Table

Frequency Range	<ul style="list-style-type: none"> • 865.600÷867.600 MHz (ETSI EN 302 208 v. 3.3.1) (Mod. R1280IE) • 902÷928 MHz (FCC part 15.247) (Mod. R1280IU) • 920.9÷922.3 MHz (ARIB STD-T107) (Mod. R1280IJ) • 920.250÷925.750 MHz (Australia Radiocommunication LIPD Class License 2015) (Mod. R1280IU) • 922.250÷927.250 MHz (New Zealand Notice Number 2022-go3100) (Mod. R1280IU)
RF Power	<ul style="list-style-type: none"> • Configurable from 8 dBm ERP to 22 dBm ERP (Mod. R1280IE) • Configurable from 8.5 dBm EIRP to 24 dBm EIRP (Mod. R1280IU, R1280IJ)
Number of Channels	<ul style="list-style-type: none"> • 4 channels (compliant to ETSI EN 302 208 v. 3.3.1) (Mod. R1280IE) • 50 hopping channels (compliant to FCC part 15.247) (Mod. R1280IU) • 4 channels using 4 units radio channel (compliant to ARIB STD-T107) (Mod. R1280IJ) • 12 hopping channels (compliant to Australia Radiocommunication LIPD Class License 2015) (Mod. R1280IU) • 11 hopping channels (compliant to New Zealand Notice Number 2022-go3100) (Mod. R1280IU)
Standard Compliance	EPC Class 1 Gen 2 - ISO18000-63
Antenna Gain	0.0 dBic (typical)
Antenna Polarization	Integrated Circular Polarized Antenna
Read Range	Up to 2.0 m (Typical)
USB Interface	USB 2.0 Full Speed (12 Mbit/s) via USB Type-C connector
Bluetooth Interface	<ul style="list-style-type: none"> • Bluetooth 4.1 Smart Ready compliant • 12 dBm EIRP output power BR/EDR • 8 dBm EIRP output power BLE • HID and Serial over GATT (BLE) • HID and SPP profiles (Bluetooth classic)
User Interface	<ul style="list-style-type: none"> • Power and Trigger buttons • Power and battery status LED • Communication and operation result LED • Bi-tonal buzzer and vibration element for event signaling
Battery Type	Li-Ion 3.7 V, 1,200 mAh
Battery Life	<ul style="list-style-type: none"> • Operating: > 12 h (with 40,000 tag readings) • Standby: > 15 days (powered off, no LED blinking)
Battery Charging Time	<ul style="list-style-type: none"> • 3 hours connected to a PC USB port • 2 hours 15 min. with 1 A AC/DC power supply
IP Rating	IP65
Dimensions	<ul style="list-style-type: none"> • 112 x 62 x 10/16 mm³ • 4.4 x 2.4 x 0.39/0.63 inches³
Operating Temperature	-10 °C to +55 °C
Weight	110 g
USB Cable Length	1.5 m

Ordering Options

WR1280IXEUAA	skID - RAIN RFID mini sled reader - ETSI		
WR1280IXUSAA	skID - RAIN RFID mini sled reader - FCC		
WR1280IXJPAA	skID - RAIN RFID mini sled reader - ARIB		

